

INTERNSHIP CATALOG



The Monteverde Institute offers internships for those interested in contributing to the Monteverde community and who want to gain tools to advance sustainability in their own lifestyles, home communities and academic studies.

MONTEVERDE INSTITUTE INTERNSHIP PROGRAM

The Monteverde Institute was founded in 1986 to guide community development and encourage the positive aspects of a growing international tourism-based economy in a small community with a fragile environment. Place-based academic programs, applied research, and community initiatives interact to highlight sustainability lessons learned in the Monteverde experience and create spaces for cross-cultural exchange fostering peace, justice, and collaboration.

The mission of the Monteverde Institute Internship program is to provide unique opportunities that allow in-depth participation in community initiatives. Each intern holds a specific role in a selected project that results in a positive contribution to the Monteverde community. We do this while providing solid support in academics, theory, methods and communication.

Interns with the Monteverde Institute work with local experts involved in a variety of community and environmentally based initiatives that investigate or contribute to solutions to local issues. Students receive background information and the skill sets necessary to accomplish their tasks. Additionally, throughout the internship, we provide multiple levels of supervision and expertise to ensure that the intern has the most authentic and beneficial experience possible.

All projects are presented publicly. So all internships end with accountability to, and feedback from, the community. All completed work is documented and cataloged in our digital, publicly accessible database for use by future generations. These learning internships help the MVI promote its mission to promote social, ecological and economic sustainability by integrating community initiatives with education, research and conservation.

INTERNSHIP FORMAT

MVI internships listed in this document are all available in on-site format. The internships range from 2-12 weeks, requiring 15-20 hours per week of supervisor meetings and independent project work, plus Spanish class time, if applicable. The exact schedule of your internship will be determined in conjunction with your supervisor.

Most of the internships described in this catalog are academic in nature, involving a close working relationship with, and oversight by, an expert in the field. In some cases, students receive credit or other recognition toward their degree from their home institution. Others are, service internships, which contribute to the more urgent needs of MVI projects, may require more advanced skills, and involve more independent work.

Homestay and Spanish (Optional)

The student can stay with a local family during the internship through our Homestay Program. John Trostle one of MVI's founders, believed that people of different cultures living under the same roof is one path to world peace, and thus our homestay program has been an integral part of MVI since the beginning.

If you wish to include Spanish classes, MVI recommends one credit hour for every 15 hours of class. In addition to Spanish classes, we have a list of cultural activities to promote a stronger sense of connection to Monteverde.

Recommended credits

Recommended Credits are based on contact hours:

15 lectures hours = 1 credit

30 lab/ field hours = 1 credit

15 discussion class hours = 1 credit



SOCIAL SCIENCES

➤ **INDIVIDUAL INTERNSHIPS**

Coloring the public space

Anibal Torres. Sustainable Land Management
Program Coordinator



Type

Academic/
Service

Duration

3-4 weeks

Period

Jan to Apr

Fields

Education
Art

Description:

Public space in Monteverde has been one of the aspects that has been left behind by the tourist growth in the area. The vision and investment in respecting, recovering and acquiring space for sidewalks, boulevards, parks and other public spaces is a recent process of the last 10 years, but it has been strategic to generate security, recreation and greater appropriation of these spaces. "Coloring the Public Space" seeks to use art as a means of communication, learning and play that promotes a conscious and joyful culture through murals, messages and games for all ages. Themes can be connected to the environment, the history, or local culture amount other.

Intern responsibilities:

- Design conceptual art in conjunction with the internship coordinator.
- Implement the painting, mural or mosaic according to the intern's skills and the needs of the site to be intervened. This part of the project would ideally involve other local artists, youth or children depending on the concept and needs.
- Document the process so it can be replicated in other spaces.

Requirements:

- Artistic skill painting or mosaics

To create:

- Paint, mural or mosaic

Storytelling & Communication with impact

C. Ignacio Loría. Community Information Center Coordinator

Type

Creative
Communications
Marketing

Duration

2-6 weeks

Period

Jan to Nov

Fields

Photography & Videography
Graphic Design & Branding
Social Media Strategy
Science Communication

Description:

The Monteverde Institute focuses on Conservation, Research, and Community but struggles with communication, as the local community often lacks awareness of its sustainable efforts. This project aims to bridge that gap by finding a creative storyteller to translate complex work into engaging visuals and narratives, ensuring the community recognizes and values the Institute's mission.



Intern responsibilities:

- Visual Documentation: Capture high-quality photos of the "Moods of Monteverde," architecture, workshops, and research.
- Campaign Execution: Contribute to marketing strategies and execute campaigns to boost local engagement.
- Brand Guardianship: Review the website and social media for visual consistency, using "Design Thinking" for valuable content.
- Cultural Immersion: Understand Monteverde's complexity to ensure culturally relevant messages.

Requirements:

- Photography: Experience with framing, own camera is beneficial.
- Design: Skilled in graphic design and social media.
- Interest: Latin American rural communities.
- Language: Intermediate to advanced Spanish.

To create:

- Digital Asset Library: High-res photos for future use.
- Social Media Content: Ready-to-post graphics and captions.
- Brand Assets: Flyers, infographics, or templates.
- Visual Audit Report: Analysis with improvement suggestions.

Knowledge Curation & Communication

C. Ignacio Loría. Community Information Center Coordinator

Type

Academic
Research
Science
Communication

Duration

2-6 weeks

Period

Jan to Nov

Fields

Library Science
Information Management
Biology / Environmental Science

Description:

Monteverde attracts global researchers, but their knowledge often stays in academic papers or leaves with them, while locals mainly benefit economically from tourism. This project aims to democratize knowledge by making local scientific research accessible and engaging for the community, bridging the gap between science and local understanding, and fostering an economy of knowledge, not just tourism.

Intern responsibilities:

- Knowledge Synthesis: Summarize complex scientific work into engaging, accessible content for non-experts.
- Database Mining: Explore databases to reveal existing Monteverde research unknown to the community.
- Curating Content: Highlight insights relevant to community issues.
- Empowering Guides: Develop specialized content for Naturalist Guides to enhance tour depth.

Requirements:

- Education: Degree or interest in Library Science, Biology, Journalism, or Environmental Education.
- Curiosity: Passion for exploring biology, local culture, and regenerative systems.
- Skills: Simplifying complex texts into engaging language naturally or assisted
- Language: Spanish is a plus.

To create:

- "Science for All" Content: Flyers, posters, and infographics for community display.
- Naturalist Newsletter: A fact-filled newsletter for local guides with insights.
- Digital Repository Entries: Organized metadata from internship research.



Community Health

Development of educational campaigns focused on health

Daily Cerdas. Community Health Program Coordinator



Type

Academic

Duration

2-4 weeks

Period

Jan to Apr

Fields

Public health

Science

Education

Description:

The project aims to produce educational campaigns addressing community health needs, focusing initially on cardiovascular diseases and mental health, followed by broader health promotion and disease prevention topics.

The internship involves developing tailored educational campaigns and materials, including workshops, blog articles, and social media content, under the guidance of the supervisor. Interns play a vital role in translating project goals into actionable strategies, disseminating crucial health information effectively, and ultimately contributing to community well-being through targeted educational initiatives.

Intern responsibilities:

- Elaboration of campaign content.
- Elaboration of educational material.
- Development and implementation of an educational workshop (if applicable).

Requirements:

- Creative person
- Proactive
- Independent
- Basic or intermediate Spanish
- MS Office package management
- Knowledge of design programs
- Knowledge of health issues or good research skills

To create:

- Health-themed educational campaign

Farm-to-Table Integration:

from the vegetable garden to MVI's kitchen

Esteban Barquero. Center for Community Initiatives



Type

Academic
Service

Duration

2-10 weeks

Period

Jan to Apr

Fields

Agriculture
Health
Education

Description:

These learning internships contribute to MVI's mission of promoting social, ecological, and economic sustainability by integrating community initiatives with education, research, and conservation.

If you have a passion for sustainable agriculture, permaculture and agroforestry, our Farm-to-Table Integration Internship offers a unique opportunity to be at the heart of this transformative process.

This internship centers on improving our vegetable garden and seamlessly integrating it into the culinary operations of the Monteverde Institute, fostering a sustainable and delicious journey from the farm to the table.

Intern responsibilities:

- Participate in the expansion of the vegetable garden, ensuring the growth of fresh and organic produce. Maintain records of garden activities, and kitchen integration efforts.
- Collaborate with the MVI staff team to implement sustainable farming and cooking practices.
- Implement quality control measures to ensure that the produce meets culinary standards.
- Collaboration in the production and application of organic bio-inputs, such as mountain microorganisms, fermentations, mineral broths.
- Engage with MVI program participants and the local community to promote the farm-to-table concept, etc.

Requirements:

- Enthusiasm for sustainable agriculture, health and farm-to-table principles
- Willingness to engage in hands-on work in the vegetable garden
- Basic knowledge of horticulture and organic farming practices (optional)
- Strong interpersonal and communication skills
- Ability to work effectively as part of a team

To create:

- Growth of fresh and organic produce in the garden
- Work with MVI's staff to incorporate garden produce into daily meal preparations
- Gain an understanding of the principles of sustainability in agriculture and food production and implement those principles in MVI's practices

Health Festival

Development of the Health Festival

Daily Cerdas. Community Health Program Coordinator

Type

Academic

Duration

2-4 weeks

Period

Sept to Nov

Fields

Public health

Science

Education

Description:

Every year, the Monteverde Institute organizes a Health Festival, open to the community. In this festival, activities with a social, physical and mental health approach are carried out, to embrace the concept of integral health. It is carried out with the support of other community organizations and entities.

The internship will support the activities of the community health program coordinator during the planning, divulgation and execution of this festival.



Intern responsibilities:

- Planning the festival schedule with the community health coordinator.
- Contacting vendors and requesting quotes.
- Scheduling vendors for activities during the festival.
- Elaboration of educational material.
- Document activities with photos and videos.
- Keeping attendance lists.
- Festival evaluation.

Requirements:

- Creative person
- Proactive
- Organized
- Works well in a team
- Basic or intermediate Spanish
- MS Office package management
- Good communication skills
- Knowledge of health issues or good research skills

To create:

- Health festival

Impact Evaluation

for the Homestay program

Karen Matarrita. Cultural Exchange Program Coordinator
Allison Cantor. PhD medical anthropology and program evaluation specialist



Type

Academic

Duration

4-6 weeks

Period

Jan to Apr

Aug to Sept

Fields

Communitarianism

Education

Description:

The internship aims to support the project of creating an impact evaluation tool for the Homestay program. The general objective is to measure and evaluate the effectiveness of the interventions carried out by the institute since the creation of the program, at the community level.

Intern responsibilities:

Create a tool that can measure the impact of the Homestay program at the community level to evaluate the effectiveness of the interventions carried out by the institute since the creation of the program.

Requirements:

- Intermediate/Advanced Spanish
- Basic computer skills
- Good physical condition (there is a possibility of traveling to various places on foot)
- Knowledge in data management, statistics, and human relations
- Empathy and assertive communication

To create:

- Create and apply an impact evaluation
- Impact evaluation report
- Results presentation
- Improvement recommendations
- Database and documentation
- Detailed surveys or interviews
- Lessons learned report

Language Instruction

English as a foreign language

Karen Matarrita. Cultural Exchange Program Coordinator

Jennie Mollica. Master in Teaching English as a 2nd Language



Type

Academic

Duration

2-12 weeks

Period

Jan to Apr

Sept to Nov

Fields

Education

Description:

It is expected to offer an immersive practice in English teaching as a second language, through a collaborative exchange between the knowledge of the organization and the intern.

The English internship is oriented to students/professionals of teaching English as a foreign language, who are interested in having experience, improving their skills, expanding their knowledge in the language, or for those who wish to get involved in a English immersive program emphasizing culture. It is a practice of English teaching as a foreign language for people of all ages.

Intern responsibilities:

- To help and assist professors.
- To assist during the oral evaluation of students.
- To manage classes (on site or virtual).
- To develop and prepare activities.
- To visit English lessons when these are taking place, as an observer.
- To design and prepare teaching materials.
- To plan lessons from 0 to concluding all the objectives.

Requirements:

- Spanish level recommended: basic to Intermediate
- English level: native or advanced
- Independent (capacity to work unsupervised)
- Use of Google meets or zoom
- MS Office package management

To create:

When finished, the intern will have become familiar with:

Navigating multicultural environments, employing immersion strategies, and preparing comprehensive lessons. Additionally, they will learn to support professors, coordinate class schedules, assess student speaking levels, plan and design classes, compare teaching methods, and conduct English lessons

Language Instruction

Spanish as a second language

Karla Rojas. Spanish Department Coordinator



Type

Academic

Duration

2-12 weeks

Period

Jan to Apr

Sept to Nov

Fields

Education

Description:

It is expected to offer an immersive practice in Spanish teaching as a second language, through a collaborative exchange between the knowledge of the organization and the intern.

The Spanish internship is oriented to students/professionals of teaching Spanish as a second language, who are interested in having experience, improving their skills, expanding their knowledge in the language, or for those who wish to get involved in a Spanish immersive program emphasizing culture. It is a practice of Spanish teaching as a second language for people of all ages.

Intern responsibilities:

- To help and assist professors.
- To assist during the oral evaluation of students.
- To manage classes.
- To develop and prepare activities.
- To visit Spanish lessons when these are taking place, as an observer.
- To design and prepare teaching materials.
- To plan lessons from 0 to concluding all the objectives.

Requirements:

- Spanish level: Recommended
ACTFL: High or Advanced Intermediate
DELE: B2-C1-C3
- Oral proficiency level will be determined in an examination by the MVI Spanish coordinator

To create:

When finished, the intern will have become familiar with:

Navigating multicultural environments, employing immersion strategies, and preparing comprehensive lessons. Additionally, they will learn to support professors, coordinate class schedules, assess student speaking levels, plan and design classes, compare teaching methods, and conduct Spanish lessons



NATURAL SCIENCES

INDIVIDUAL INTERNSHIPS

Field Research in Conservation

Data collection and analysis, results dissemination

Luisa Moreno. Staff biologist and research coordinator



Type

Academic

Duration

2-10 weeks

Period

Depends on the Project, all year round.

Fields

Nature

Climate

Conservation

Education

Description:

The objective of this internship is to collect research data for the different projects of the MVI Research Program, in areas such as bird ecology & conservation, tropical habitat restoration & comparative forest integrity, bat distribution, water quality, and monitoring of terrestrial mammals in the Crandell Memorial Reserve; analyze data, interpret results and prepare the information for distribution to a wider audience.

Read more about the available projects on the next page.

Intern responsibilities:

- Interns will provide support in data collection, like setting camera traps for terrestrial mammals' richness, plant surveys, fruit abundance, bird mist-netting & tagging, butterflies' richness, etc.
- Literature review.
- Data entry and analysis, result interpretation and dissemination.

Requirements:

- Enthusiasm is a key personality trait for any of the projects
- Basic knowledge of ecology
- Good stamina for field work and willingness to get wet and muddy
- Basic knowledge of MS Excel or R

To create:

- Literature review
- Data base
- Analysis and interpretation of the results in a written report
- Final public presentation

Field Research in Conservation

Luisa Moreno. Staff biologist and research coordinator



Project: Forest Integrity in Restored Habitats

In collaboration with the Costa Rican Conservation Foundation



The aim of this project is to collect information to increase knowledge about how rehabilitated former pastures are recovering their functionality as a forest. We are interested in the integrity of the areas that have been restored in our reforestation program, old pastures that we called “new forest”, and investigate the functionality of those areas as compared to older forests (secondary forest over 50 years). Two components of this study involve biodiversity comparisons and ecosystem services.

Adopt a stream Citizen Science Project

The main objective of the Monteverde Institute’s Adopt a stream (AAS) project is to promote awareness about the ecology and health of the aquatic ecosystems in the Monteverde, by a hands-on experience; while maintaining a long-term data base on water quality of the stream in the MV area. The sampling frequency is every two months.



MoSI Project - Monitoring Neotropical migrants in winter

In collaboration with the Institute for Bird Populations



The main goal of the MoSI project is to collect information about the Nearctic-Neotropical migratory landbirds on the nonbreeding grounds in the tropics during their winter migration. MoSI is a collaborative, international network of bird monitoring stations that seeks to gather information about the complete annual cycle of the Neotropical Migrants and the resident species. The MVI runs one of these stations in the Crandell reserve since 2014.

Community Innovation

C. Ignacio Loría. Community Innovation Laboratory
Coordinator



Type

Academic
Service learning
Professional

Duration

4 – 8 weeks

Period

Jan to Nov

Fields

STEAM
Biomimicry
Data Analysis
Project Management

Description:

The Community Innovation Lab (LINC) is a groundbreaking new initiative located within the Monteverde Institute. Our mission is to bridge the "digital divide" in our rural region, transforming the LINC into a hub where locals can expand their abilities and prototype solutions.

Uniquely situated in the cloud forest, LINC operates on the principles of Biomimicry—we work with nature to create solutions, rather than creating new environmental problems. We are seeking an intern to help establish this vision, operationalize the lab, and connect these high-tech tools to the real-world needs of the Monteverde community.

Intern responsibilities:

- **Optimize** operations by enhancing LINC workflow efficiency with maintenance and safety protocols.
- Conduct **community research** to address local needs, such as using a CNC router for farmers.
- **Benchmark** by studying global makerspaces for adaptable programs in Monteverde.
- **Design workshops** to empower locals with new technical skills beyond tourism.

Requirements:

Mindset: Proactive, curious, autonomous problem-solver with a focus on innovation.

Tech Skills: Experience in CAD, 3D modeling, 3D printing, or CNC software preferred.

Background: Degree in Systems Engineering, Industrial Design, Biology, or Computer Science preferred.

Language: Intermediate Spanish recommended for community assessments and workshops.

To create:

SOPs: Easy guides for machine use and lab safety.

Research Report: Document on potential lab use-cases.

Action Plan: Plan for diverse lab user scenarios.

Workshop Curriculum: Lesson plan for tech or sustainability workshops.

Monitoring Frugivory Interactions

Daniela Quesada Cruz. Community-based Conservation Program Coordinator



Type

Academic

Duration

3-6 weeks

Period

Jan to April

Fields

Environment
Conservation
Sustainability
Resilience
Education

Description:

This monitoring focuses on understanding the importance of local tree species as a food source for native fauna and the importance of these interactions for the dispersal of seeds from endangered trees. This information is important both for conservation decision-making and for education.

The intern will support the installation of camera traps and/or the analysis and/or interpretation of previously collected data.

Intern responsibilities:

Support the installation of camera traps and/or the analysis and/or interpretation of previously collected data.

Requirements:

- Interest and basic knowledge of ecology, conservation and research
- Basic knowledge of mammal identification
- Previous experience in data entry and attention to detail
- Also, due to the occasional placement of the cameras, physical fitness and willingness to get dirty

To create:

- Update of databases and/or analysis and interpretation of data and a written report

Tropical Habitat Restoration

Daniela Quesada Cruz. Community-based Conservation Program Coordinator



Type

Academic

Duration

3-8 weeks

Period

May to July

Fields

Environment
Conservation
Sustainability
Resilience
Education

Description:

The Reforestation Program is a collaboration between the Monteverde Institute and the Costa Rican Conservation Foundation that has focused on the recovery, protection and conservation of forest cover in the Bellbird Biological Corridor connecting cloud, rain, premontane, seasonal, and mangrove forests.

It makes efforts dedicated to the preservation of migration routes of the bellbird (*Procnias tricarunculatus*) and it promotes the sustainable development of communities through the restoration of vulnerable forest ecosystems.

The intern will support the reforestation team during the arduous day of delivery, transportation and planting of trees, as well as in the daily entry of delivery data for subsequent analysis.

Intern responsibilities:

Support tree seedling distribution, as well as collecting data from landowners and making lists of trees delivered daily. Subsequently, you must enter the lists into the database daily. You will also support with other tasks related to visitor reception, maintenance in nurseries and plantating.

Requirements:

- Interest and basic knowledge of ecology and restoration
- Experience with database management
- Basic Spanish is recommended
- Attention to detail and good organization
- Initiative and good attitude
- Physical fitness and willingness to work hard and get dirty

To create:

- Databases on tree deliveries and updated information on landowners

Pollinator Garden

Esteban Barquero. Center for Community Initiatives



Type

Academic

Duration

3-4 weeks

Period

Jan to April

Fields

Nature

Conservation

Education

Description:

The project would focus on garden design using native plants to attract pollinators, specifically hummingbirds. A Hummingbird Garden would be created to renovate the garden beds directly behind the Institute. This garden would set the example for an environmentally friendly alternative to using feeders to attract hummingbirds.

The internship would be a combination of investigation and design. Starting with the observation and research on hummingbird species of the region, their habits and favorite flowers, etc. The intern would then create a garden design and plant list based on their ornamental value, hummingbird draw and the environmental needs of the plants.

Intern responsibilities:

-The intern would be responsible for the research and design of the gardens, including a plant list.

Requirements:

- Initiative and good attitude
- Biological background and/or environmental education
- Attention to detail and good organization
- Physical fitness and willingness to work hard and get dirty

To create:

A garden design rendered to scale with a plant list and interpretative signage/plant labels. As well as a guide on how to design a garden for hummingbirds based on the birds' habits

Measuring impact

of rainwater capture systems in Monteverde

Anibal Torres. Sustainable Land Management
Program Coordinator.



Type

Academic

Duration

3-4 weeks

Period

May to December

Fields

Environment

Conservation

Description:

As part of an effort in the comprehensive management of water resources, the Monteverde Institute, together with the University of Costa Rica and Bosqueterno S.A. have been working on the installation of rainwater capture and storage systems. In addition to this work, the project aims to quantify this impact in the places where these systems were installed. Analog meters will be placed on selected sites allowing, to measure water flow, generate data and perform analysis regarding consumption patterns, main uses and savings of drinking water.

Intern responsibilities:

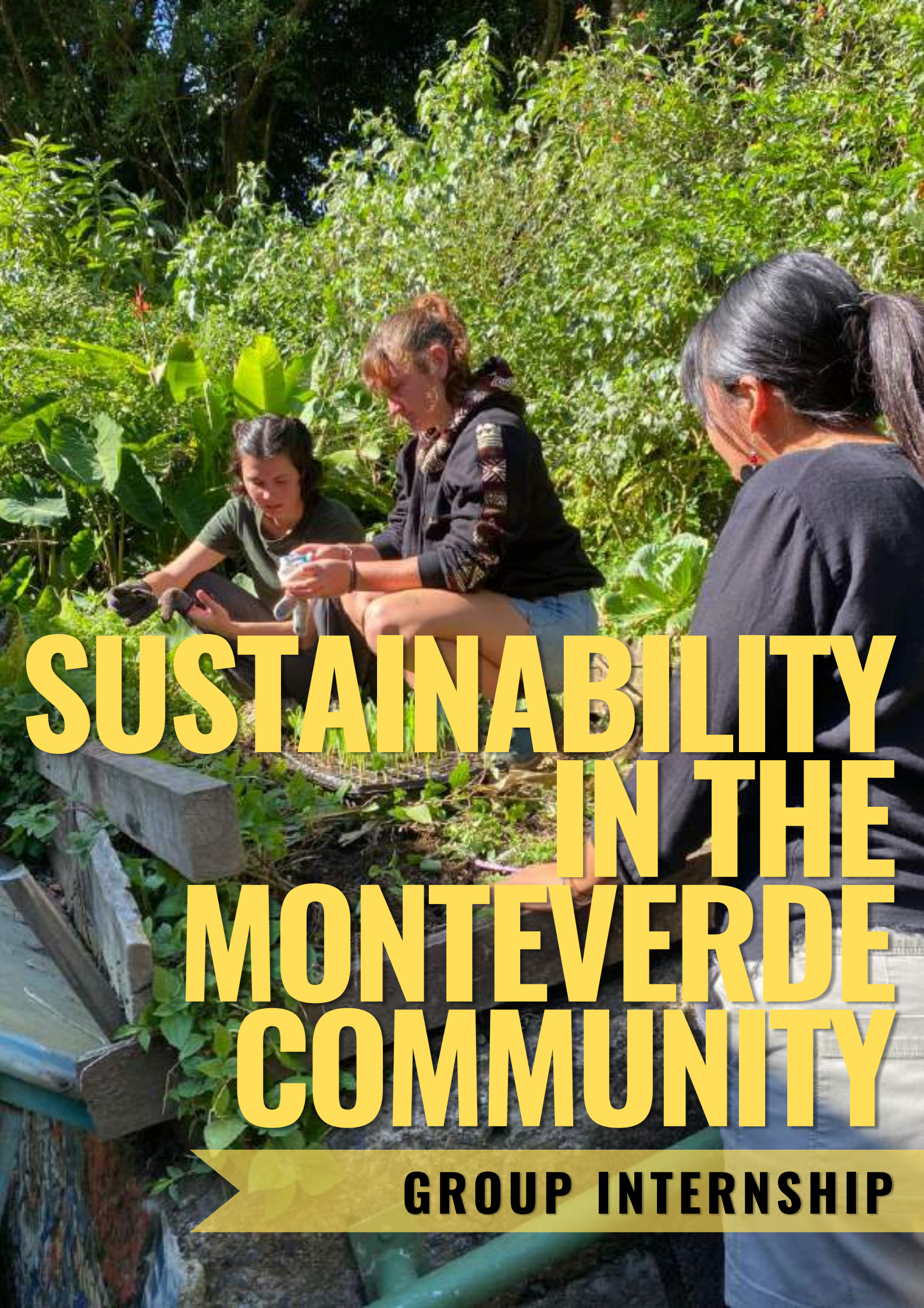
- Installation of meters.
- Data collection.
- Information analysis.

Requirements:

- Basic use of MS Excel
- Training in environmental sciences or comparable training

To create:

- Report
- Final presentation



SUSTAINABILITY IN THE MONTEVERDE COMMUNITY

GROUP INTERNSHIP



Integrated Sustainability Immersion: learning by doing.

Coordinator varies, depending on the internship

Type

Academic

Duration

4-12 weeks

Period

Summer (Mid-May to Mid-September)

Fall (Mid-September to Mid-December)

Fields

Conservation
Sustainability
Research
Production
Technology
Community work

Description:

Our group internship model offers participants an interdisciplinary and comprehensive experience that covers topics such as community conservation, wildlife research, sustainable production, art, technology, and culture.

The internship format allows you to work and learn alongside other students on internal projects and community initiatives led by Institute supervisors and local experts. The program fosters personal growth, teamwork, and a deeper understanding of social, environmental, and cultural issues while preparing students for future careers in related fields.

The experience includes other complementary activities such as field trips, dance classes, cooking classes, and more.

This internship is open to students from any field of study.

Requirements:

- Minimum of 4 weeks

Cost:

- Refer to page 26: **Internship Pricing**

Integrated Sustainability Immersion: learning by doing.

Coordinator varies, depending on internship

How does this internship look:

Weekly schedule (Example)

Monday	Tuesday	Wenesday	Thursday	Friday
SP	PG	TC	I	PS

An internship with a variety of experiences:

ID	Name	Description	Supervisor
SP	Sustainable production	Develop skills in organic production from planting, edible landscapes,generating bio-inputs, and controlling weeds and pests.	Esteban
PS	Public space enhancement through art	Help enhance public spaces such as sidewalks, parks, and other public places through art while developing your skills in this area.	Gabriela
PG	Pollinator ´s gardens	Learn how to design, maintain, and enhance public spaces through native gardens while creating a habitat for local pollinators	Evelyn Leitón
RS	Wildlife Research	Learn about wildlife monitoring techniques through the use of camera traps, while assisting in a monitoring project in our private reserve.	Luisa/ Esteban
I	Innovation	Be part of our Community Innovation Lab. Let's work together to build innovative solutions to the challenges and questions raised by our community outreach programs. Learn how to prototype and use technological tools such as 3D printers, laser printers, and many other devices.	Ignacio
C	Community Consevation	Learn more about our tree diversity, assist in our Community Conservation program in activities where you can learn about species identification, nursery maintenance, and reforestation.	Eladio
Cul	Culture	Dance, cooking class and language	Karla
FT	Fiel trip	During the internship, students will participate in a field trip to the Pacific Trail, located within the Bellbird Biological Corridor.	

**WANT
TO
APPLY?**



Application process



In order to be considered for an internship with the Monteverde Institute, please complete the following:

- Curriculum vitae or resume, including:
 - Academic awards, honors, scholarships, or fellowships
 - Internship, volunteer, and employment history
 - Significant international travel experience (dates, duration, purpose)
- Two letters of recommendation
- Application fee: \$50 via paypal@mvinstitute.org

Submit the documents to Lilliam Zuñiga logistica@mvinstitute.org

Note: Applications will not be considered until the application fee is received. Must be 18 or older to apply. Accepted applicants will be required to provide proof of international health insurance, and proof of valid passport.

Thanks for your interest in the Monteverde Institute, our community, and the internship program!

If you have any questions, please contact Lilliam Zuñiga, logistica@mvinstitute.org or +506-2645-5053 ext.111

Internship Pricing (USD)

Internship Duration:	2 weeks	3 weeks	4 weeks	6 weeks	8 weeks	10 weeks	12 weeks
Basic On Site	\$1424.00	\$1830.00	\$2320.00	\$3262.00	\$4205.00	\$5149.00	\$6092.00
Spanish Classes	The price for Spanish instruction is \$22 per hour up to 20 hours; \$21.50 per hour if 20 or more						
Cultural Activities	Ask us about options to get to know the Monteverde community!						
Registration Fee	\$50 via paypal@mvinstitute.org						

- Includes homestay with a local family (single room, 3 meals per day, laundry service), project transportation and MVI shirt.
- Prices include all administrative fees, taxes, supervision and a contribution to the project related to the internship.
- Discount available for MVI alumni.
- International wire transfer instructions will be included with the invoice once the application is accepted.

**Thanks for your interest in the Monteverde Institute, our community,
and the internship program!**

If you have any questions, please contact Lilliam Zuñiga,
logistica@mvinstitute.org or +506-2645-5053 ext.111

Follow us and learn more

Meet our Interns, click [here](#)

Follow us on social media:



We livestream nearly all of the events we host that are open to the community on Facebook Live, and recordings are always available.

Visit our [website](#)

Check out our [blog](#)

Sign up for our [newsletter](#)



**Thanks for your interest in the Monteverde Institute, our community,
and the internship program!**

If you have any questions, please contact Lilliam Zuñiga, logistica@mvinstitute.org or +506-2645-5053 ext.111

